

MONTHLY
IMPORT UPDATE
DECEMBER 2022

Coal & Coke

ECONOMIC UPDATE



ECONOMIC UPDATE

Global Economy

As the worst of COVID-19's impacts on public health subsided, the crisis in Ukraine and China's strict "zero COVID" restrictions introduced additional uncertainty into global supply chains. Food and energy costs have skyrocketed as inflation in many nations has reached four-decade highs.

The global manufacturing PMI decreased once further in December, to 48.6. In wealthy economies, the retreat is more pronounced.

In China, the government is abandoning its "zero COVID" policy, in part to lessen disturbance to the economy. Chinese industrial production fell for the fifth consecutive month in December, as the nation battled with an unprecedented surge in COVID-19 cases following the relaxation of several regulations aimed at preventing the virus's spread.

The UK manufacturing industry ended 2022 on a sour note, with production, new orders, and employment all declining at quicker rates. The UK Manufacturing PMI has now been below the neutral 50 thresholds for five months in a row. In December, the manufacturing PMI was 45.3 basis points. Inflation has been decreasing in the UK at the same time when the nation's fuel prices ease.

Manufacturing activity in the United States fell for the second month in a row in December, to 48.4 points, concluding the worst annual decline in the main factory measure since 2008 and contributing to increased pricing pressures.

Indian Economy

The retail inflation rate in India fell to 5.72 percent in December, the lowest in a year, and remained within the Reserve Bank of India's (RBI) comfort range of 2%-6% for the second month. Lower food prices, notably a drop in vegetable prices, contributed to inflation being within the tolerance range. Food inflation, which accounts for almost 40% of the inflation basket, was 4.19% in December, compared to 4.67% the previous month. The CPI fell 0.45% from the previous month, the largest drop since January 2021.

On an annual basis, wholesale price index-based inflation in India fell to 4.95 percent in December from 5.85 percent in November. For the first time since February 2021, the inflation rate has fallen below 5%. The month-on-month change in the WPI index for December 2022 was 1.12%, compared to a contraction of 0.26 the previous month.

India has outperformed the world's top economies for a seventh consecutive month according to the release of the manufacturing PMI data for December. In the top four economies of the United States, the United Kingdom, and China, only India has increased industrial production. All of the other nations saw a contraction in December.



India's domestic coal production touched an eight-month high and a historical high in any year of December month totalled 82.87 million metric tons (MMT). With this level, the production in Dec-22 hit 11% year-on-year (YoY) and 9% month-on-month (MoM) growth. India's total production for the current year 2022 reaches 862.05 MMT, an increase of 12% compared to the corresponding period of last year. The coal production in the country sees a huge rise, showing the efforts of the Indian government paving the way. Domestic production has been encouraged by govt and further high targets for production have been set for the coming years to fulfil India's ever-growing electricity demand.

The manufacturing sector in India finished 2022 with a good performance, as business conditions improved to the largest level in more than two years. The manufacturing purchasing managers' index increased to 57.8 in December from 55.7 in November. In December, India's services activity increased to a six-month high, boosted by increased new business and favourable market conditions. The seasonally adjusted S&P Global India Services PMI increased from 56.4 in November to 58.5 in December. The S&P Global India Composite PMI Output Index increased from 56.7 in November to 59.4 in December, the fastest rate of growth since January 2012.

The Index of Industrial Production increased 7.1% in November, compared to a 4% contraction in October. Between April and November, industrial activity increased by 5.5 percent. After contracting by 4% in October, IIP growth returned to positive territory in November.

The gross GST revenue collected during December 2022 is Rs 1,49,507 crore, of which CGST is Rs 26,711 crore, SGST is Rs 33,357 crore, IGST is Rs 78,434 crore (including Rs 40,263 crore collected on import of goods) and Cess is Rs 11,005 crore (including Rs 850 crore collected on import of goods). The revenues for the month of December 2022 are 15% higher than the GST revenues in the same month last year. During the month, revenues from the import of goods were 8% higher and the revenues from domestic transactions (including the import of services) are 18% higher than the revenues from these sources during the same month last year.

The Indian auto industry sold over 2.28 lakh units in December 2022 alone, a 3.6 percent increase over the 2.20 lakh units sold in the same month in 2021. The increase in sales figures reflects rising automotive demand in India, as well as a little improved semiconductor chip scenario. In the year 2022, the Indian auto industry had its highest-ever yearly domestic passenger vehicle sales. In 2022, the country sold 3.793 million or 37.93 lakh units, a 23.1 percent increase over the previous year.

India's demand for petrol and diesel increased dramatically in December, as increased agricultural usage helped capitalise on the holiday season's momentum. Petrol sales jumped 8.6% to 2.76 million tonnes in December, compared to 2.54 million tonnes in the same month the previous year. Sales were up 23.2% from pre-pandemic December 2019 and 13.3% from COVID-affected December 2020. Diesel sales increased by 13% in December to 7.3 million tonnes, compared to the same month the previous year. Consumption climbed 14.8% compared to December 2020 and 11.3% compared to pre-COVID 2019.

IMPORTS: COAL & COKE



IMPORTS: COAL & COKE

The total coal & coke imports of India hitting a ten-month low in December 2022 stood at 17.36 MMT down from 18.65 MMT (7% MoM down) in Nov-22 and up from 14.94 MMT (16% YoY up) in Dec-21. As anticipated by us earlier, India finished the year 2022 at an import level of 244.45 with a 14% YoY rise. The total imports of the 2022 year however still fall to 6% when compared to the pre-covid year of 2019's import level of 259.711 MMT.

Thermal coal imports further reduce and touch a ten-month low at an import level of 10.08 MMT in Dec with a 15% MoM decline, though it is still 16% YoY higher. The higher domestic production in India silenced the demand for imported coal in Dec.

Coking coal imports increase with the approval of the FTA with Australia, however, stayed stabilized for the year. The total coking coal imports for Dec edged up 15% YoY and 18% MoM to 4.49 MMT. For the year 2022 coking coal imports reduced to 2% compared to 2021.

Petcoke imports reduced to 0.93 MMT in Dec with an 8% YoY and 3% MoM decline but finished the year 2022 with strong growth of onefold compared to the last year 2021 due to higher thermal coal prices.

Metcoke imports totalled 0.41 MMT in December 2022 at twofold YoY and a 5% MoM increase in import level.

Anthracite imports showed a 29% YoY and 64% MoM expansion with an import level of 0.16 MMT in December.

PCI imports comprise 1.29 MMT in Dec 2022, up from 1.06 MMT (22% YoY rise) in Dec 2021 and down from 1.60 MMT (19% MoM reduction) in Nov 2022.

India's traditional top importing partner's import statistics in December month are as follows: Indonesia at 6.40 MMT (up 42% YoY, down 18% MoM), Australia at 4.29 MMT (down 16% YoY, up 15% MoM), Russia at 1.88 MMT (up to twofold YoY, down 24% MoM), South Africa at 1.65 MMT (down 18% YoY, up 67% MoM), and USA at 1.41 MMT (up 6% YoY, down 8% MoM).

South Africa which came down to sixth position in Nov again join the top five importing countries list in Dec-22 with a 64% MoM rise in its import level into India.

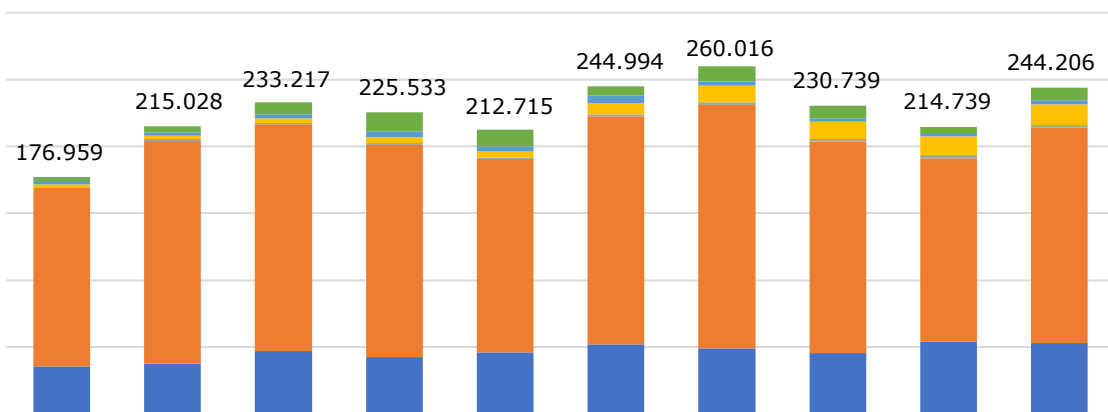
Total share contribution and changes in share patterns of India's top five trading partners in the year 2022 are as follows: share of five nations in India's total imports (94% in 2021 to 92% in 2022), Indonesia (45% in the year 2022, up from 34% in 2021) Australia (22% in 2022, down from 36%) Russia (8% in 2022, up from 4%) South Africa (9% in 2022, down from 12%), and USA (8% in 2022, up from 7%).



India's Coal & Coke Import (Million Metric Tons)

	Dec-22	YoY		MoM		YTD (Full Calendar Year)				
		Dec-21	% Change	Nov-22	% Change	CY 2022	CY 2021	% Change	CY 2019 (Pre-Covid Level)	% Change
COKING COAL	4.488	3.906	14.89 %	3.817	17.57 %	53.100	54.278	(2.17)%	48.707	9.02 %
THERMAL COAL	10.080	8.687	16.04 %	11.792	(14.52)%	160.675	137.023	17.26 %	181.761	(11.60)%
ANTHRACITE	0.155	0.112	38.80 %	0.095	64.00 %	2.255	2.185	3.21 %	1.988	13.43 %
PCI COAL	1.294	1.061	22.00 %	1.597	(18.95)%	15.246	14.187	7.46 %	12.681	20.23 %
MET COKE	0.407	0.161	153.34 %	0.389	4.66 %	3.324	2.174	52.91 %	3.245	2.43 %
PET COKE	0.933	1.009	(7.58)%	0.958	(2.61)%	9.822	4.894	100.70 %	11.329	(13.30)%
TOTAL	17.36	14.94	16.21 %	18.65	(6.92)%	244.42	214.74	13.82 %	259.711	(5.89)%

Total Coal & Coke (MMT)



	CY 2013	CY 2014	CY 2015	CY 2016	CY 2017	CY 2018	CY 2019	CY 2020	CY 2021	CY 2022
Petcoke	2.780	4.359	9.193	14.586	12.423	6.827	11.329	9.818	4.894	9.821
Metcoke	2.385	2.752	3.092	3.685	3.453	5.461	3.245	2.632	2.174	2.964
PCI	1.888	2.371	3.244	4.794	5.175	8.481	12.681	12.755	14.220	15.243
Anthracite	0.750	1.411	1.177	1.179	1.281	1.671	1.996	1.954	2.185	2.256
Thermal Coal	133.536	166.587	169.584	158.572	144.451	170.527	181.927	157.932	137.413	160.823
Coking Coal	35.619	37.549	46.927	42.716	45.931	52.026	48.838	45.648	53.854	53.099
Total Coal & Coke	176.959	215.028	233.217	225.533	212.715	244.994	260.016	230.739	214.739	244.206

IMPORTS: THERMAL COAL



IMPORTS: THERMAL COAL

Thermal coal imports of India in the last month of the year 2022 touched a ten-month low at 10.08 MMT, down 15% MoM, howbeit have seen a 16% rise YoY. Thermal coal imports in the month of Nov 2022 and Dec 2021 was 11.79 MMT and 8.69 MMT respectively.

India's power consumption logged a double-digit growth of over 11% to 121.19 billion units in December 2022 compared to the year-ago period. November consumption was 112.81 billion units. Despite the fact that India is more than 70% dependent on coal power generation, the country has managed to minimise imports by increasing coal output. India's thermal coal production continues to increase in Dec-22 with 82.87 MMT of output.

Indonesia continues to be the top supplier to India with 6.05 MMT of thermal coal being exported in Dec month. The imports are 37% higher than last year but decreases by 20% from last month. Our top importer-Indonesia finish the year with nearly 107 MMT of coal export, 48% higher compared to last year and 12% lower compared to the pre-covid level. South Africa and the USA again come back to the race with imports increasing to 67% and 30% MoM respectively but on the other hand, Russian imports have a significant decrease(63%) from last month's level. Yet if we compared the whole year's data SA and the USA imports have been down to 14% and 44% compared to the last year 2021, whereas Russian imports have increased fourfold during the same period.

The thermal cargo from New Zealand has arrived for the second time in Indian history. In December month 0.06 MMT of thermal coal has been imported from New Zealand. The first time 0.05 MMT of thermal coal was imported from the region was in 2018.

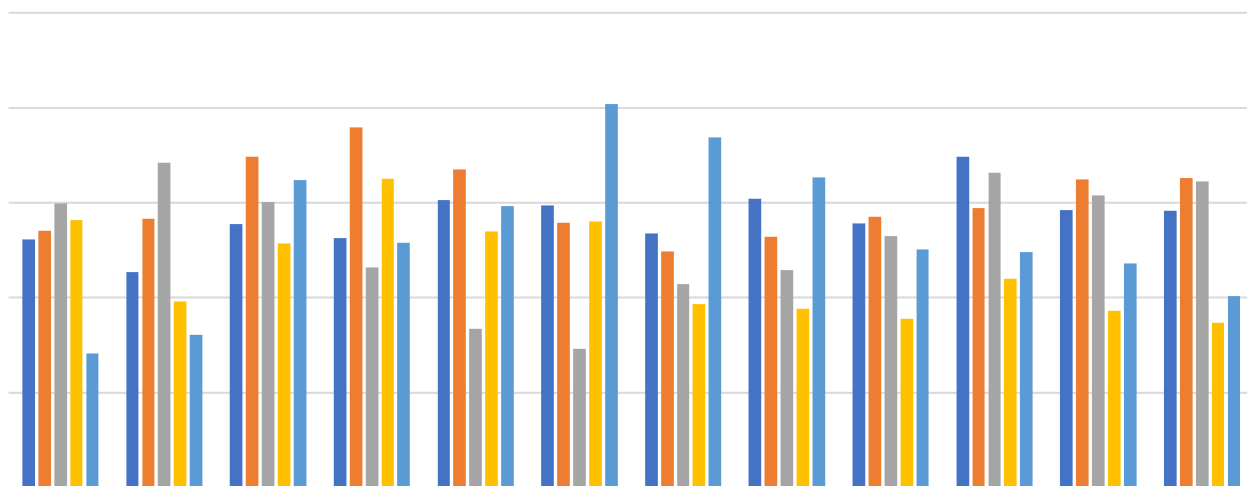
The 2022 year ended with a total of 160.68 MMT of thermal coal imports seeing a 17% rise from 137.02 MMT of imports in the 2021 year however, 12% was down from 181.76 MMT of imports in the year 2019.



India's Thermal Import (Metric Tons)

	Dec-22	YoY		MoM		YTD (Full Calendar Year)				
		Dec-21	% Change	Nov-22	% Change	CY 2022	CY 2021	% Change	CY 2019 (Pre-Covid Level)	% Change
AFGHANISTAN						197				
AUSTRALIA	783,898	1,111,315	(29.46)%	782,051	0.24 %	10,801,143	21,953,872	(50.80)%	3,713,663	190.85 %
BHUTAN									499	
BOTSWANA						129				
COLOMBIA						51,225			672,212	(92.38)%
INDONESIA	6,051,312	4,421,305	36.87 %	7,601,656	(20.39)%	106,995,029	72,473,426	47.63 %	120,966,096	(11.55)%
KAZAKISTAN							651,491			
MOZAMBIQUE	588,704	436,985	34.72 %	835,603	(29.55)%	5,536,505	3,120,682	77.41 %	2,851,799	94.14 %
NEW ZEALAND	62,097					62,097				
PHILIPPINES						74,197			54,550	36.02 %
RUSSIA	437,149	347,639	25.75 %	1,196,125	(63.45)%	8,792,821	1,872,502	369.58 %	2,815,945	212.25 %
SOUTH AFRICA	1,650,199	1,981,266	(16.71)%	987,621	67.09 %	21,834,630	25,483,582	(14.32)%	42,078,331	(48.11)%
TANZANIA						112,057	32,556	244.20 %		
USA	506,391	388,119	30.47 %	389,225	30.10 %	6,415,275	11,434,397	(43.89)%	8,608,577	(25.48)%
TOTAL	10,079,750	8,686,629	16.04 %	11,792,281	(14.52)%	160,675,304	137,022,508	17.26 %	181,761,672	(11.60)%

Thermal Coal (MMT)



	JAN	FEB	MAR	APR	MAY	JUN	JUL	AUG	SEP	OCT	NOV	DEC
■ 2018	13.052	11.353	13.870	13.122	15.140	14.842	13.388	15.213	13.919	17.434	14.607	14.587
■ 2019	13.520	14.162	17.423	18.950	16.766	13.933	12.452	13.225	14.253	14.715	16.230	16.295
■ 2020	14.977	17.117	15.046	11.591	8.354	7.299	10.727	11.461	13.253	16.588	15.395	16.124
■ 2021	14.096	9.791	12.866	16.251	13.484	14.031	9.649	9.403	8.873	10.981	9.300	8.687
■ 2022	7.069	8.038	16.201	12.890	14.818	20.206	18.449	16.316	12.551	12.413	11.792	10.080

IMPORTS: PETCOKE



IMPORTS: PETCOKE

India's petcoke imports in December 2022 stood at 0.93 MMT with an 8% YoY and 3% MoM decline. The petcoke imports in the last month and last year were 0.96 MMT and 1.01 MMT respectively.

The cost of petcoke was significantly competitive compared to its near substitute thermal coal last year and that is the reason petcoke imports are double this year. Cement manufacturers who shifted to thermal coal in 2021 for better prices again move to petcoke due to the higher cost of thermal coal. Petcoke prices were more or less the same for the years 2021 and 2022 yet higher thermal coal prices make petcoke more favourable to the cement sector.

The three major origins from where India imports its petcoke of which two have seen a decline in Dec month. Saudi Arabia and Venezuela-origin petcoke reduced to 2% and 59% MoM at 0.22 MMT and 0.06 MMT imports level. India's top supplier of petcoke-the USA imports surged by 13% MoM to 0.5 MMT yet declined by 21% YoY. Since the whole year data has come up, the USA and Saudi have again captured the Indian market with a twofold and 96% increment in imports compared to the 2021 year. Venezuela makes an entry into the Indian market in 2022 only and becomes the third-largest supplier of petcoke during the year.

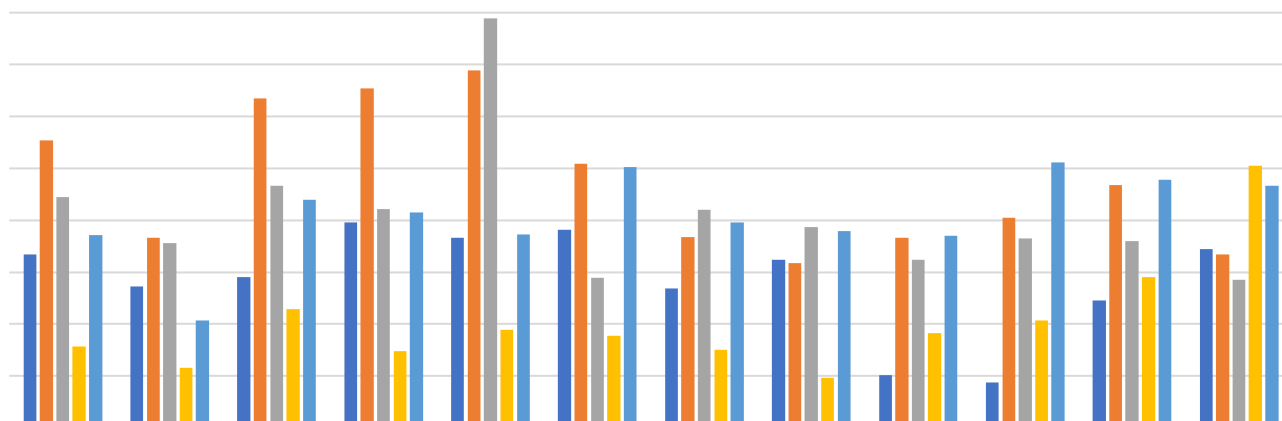
Petcoke imports doubled over a year period from 4.89 MMT in 2021 to 9.82 MMT for the year 2022. The imports are still 13% below than the pre-covid level of 11.33 MMT.



India's Petcoke Import (Metric Tons)

	Dec-22	YoY		MoM		YTD (Full Calendar Year)				
		Dec-21	% Change	Nov-22	% Change	CY 2022	CY 2021	% Change	CY 2019 (Pre-Covid Level)	% Change
USA	502,898	639,799	(21.40)%	443,987	13.27 %	4,071,648	1,573,796	158.72 %	5,836,446	(30.24)%
SAUDI ARABIA	215,273	270,012	(20.27)%	219,103	(1.75)%	3,606,862	1,840,113	96.01 %	3,513,778	2.65 %
CHINA	4,551	22,917	(80.14)%	30,146	(84.90)%	289,581	402,470	(28.05)%	661,867	(56.25)%
VENEZUELA	55,161			134,802	(59.08)%	730,348				
OMAN	17,159	30,889	(44.45)%	38,500	(55.43)%	194,787	156,619	24.37 %	357,754	(45.55)%
KUWAIT	21,000			33,000	(36.36)%	230,493	268,110	(14.03)%	141,599	62.78 %
MALAYSIA	17,722	040		19,040	(6.92)%	159,945	118,647	34.81 %	98,370	62.60 %
GERMANY	30,167			30,005	0.54 %	139,303	130,460	6.78 %	93,512	48.97 %
ARGENTINA		24,380				47,833	82,038	(41.69)%	99,098	(51.73)%
UAE	22,000					122,314	44,181	176.85 %	55,690	119.64 %
OTHER	46,972	21,425	119.24 %	9,353	402.21 %	229,112	277,437	(17.42)%	471,319	(51.39)%
TOTAL	932,903	1009,462	(7.58)%	957,936	(2.61)%	9,822,226	4,893,870	100.70 %	11,329,431	(13.30)%

Petcoke (MMT)



	JAN	FEB	MAR	APR	MAY	JUN	JUL	AUG	SEP	OCT	NOV	DEC
■ 2018	0.668	0.545	0.582	0.792	0.732	0.763	0.538	0.647	0.204	0.174	0.492	0.689
■ 2019	1.108	0.733	1.269	1.309	1.377	1.018	0.735	0.635	0.732	0.809	0.937	0.667
■ 2020	0.890	0.712	0.933	0.842	1.578	0.578	0.840	0.773	0.649	0.731	0.721	0.572
■ 2021	0.315	0.232	0.457	0.296	0.377	0.354	0.302	0.192	0.365	0.414	0.580	1.009
■ 2022	0.742	0.413	0.879	0.830	0.746	1.005	0.792	0.759	0.741	1.024	0.957	0.933

IMPORTS: COKING COAL



IMPORTS: COKING COAL

The coking coal imports into India surged for Dec 2022 month with an increase of 15% YoY and 18% MoM at level 4.45 MMT. The imports of coking coal in Dec 2021 and Nov 2022 were 3.91 MMT and 3.82 MMT.

Indian steel industry growing but at a slower pace due to the global slowdown. The slowdown in the largest end-user industry made coking coal demand stable for a year. Increasing metcoke and PCI imports for the steel industry have also played role in stabilizing coking coal demand in 2022. The coking coal imports are anticipated to stay at an average of 4 to 4.5 MMT for the next few months.

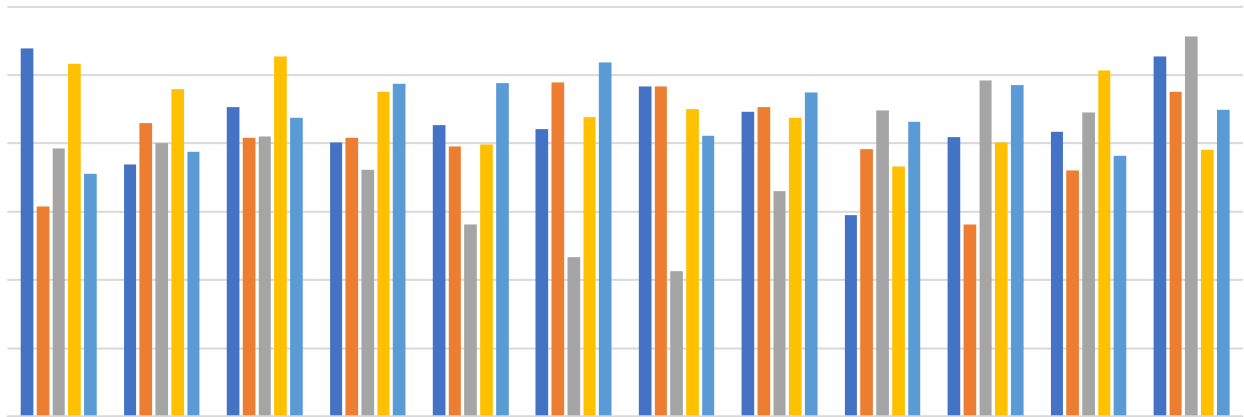
The approval of the Free Trade Agreement has significantly improved imports from Australia. Australian coking coal with 34% MoM rise once more touch the 3 million mark in Dec. However this year Australia has lost its market share from India, whereas other origins have increased it. Australia with 36.34 MMT of exports to India down by 20% compared to last year. The USA coking coal gained a significant share from 3.12 MMT in 2021 to 7.27 MMT in 2022. Russia with the highest rise of eightfold stood at 1.75 MMT in 2022.

The CY 2022 import of coking coal was down to 2% from 53.10 MMT from 54.28 MMT in the comparable period of 2021. The total imports however increased by 9% from the pre-covid level.

India's Coking Coal Import (Metric Tons)										
	Dec-22	YoY		MoM		YTD (Full Calendar Year)				
		Dec-21	% Change	Nov-22	% Change	CY 2022	CY 2021	% Change	CY 2019 (Pre-Covid Level)	% Change
AUSTRALIA	3,058,750	3,142,728	(2.67)%	2,290,543	33.54 %	36,343,717	45,555,254	(20.22)%	35,834,060	1.42 %
CANADA	198,000	155,000	27.74 %	213,702	(7.35)%	2,502,977	2,359,933	6.06 %	4,894,612	(48.86)%
COLOMBIA									16,870	
INDONESIA	329,096	75,987	333.10 %	238,870	37.77 %	2,604,922	1,211,068	115.09 %	1,199,011	117.26 %
MOZAMBIQUE	170,983	152,553	12.08 %	188,174	(9.14)%	2,483,625	1,643,205	51.15 %	1,952,598	27.20 %
NEW ZEALAND						148,505	144,501	2.77 %	296,012	(49.83)%
RUSSIA	328,860	74,058	344.06 %	183,800	78.92 %	1,745,230	198,058	781.17 %	300,820	480.16 %
USA	402,215	305,922	31.48 %	702,022	(42.71)%	7,271,262	3,165,570	129.70 %	4,213,033	72.59 %
TOTAL	4,487,904	3,906,248	14.89 %	3,817,111	17.57 %	53,100,238	54,277,588	(2.17)%	48,707,015	9.02 %



Coking Coal (MMT)



	JAN	FEB	MAR	APR	MAY	JUN	JUL	AUG	SEP	OCT	NOV	DEC
■ 2018	5.392	3.691	4.534	4.018	4.266	4.212	4.838	4.460	2.954	4.091	4.171	5.277
■ 2019	3.078	4.302	4.084	4.081	3.956	4.895	4.830	4.534	3.911	2.810	3.606	4.752
■ 2020	3.926	4.001	4.104	3.614	2.812	2.336	2.128	3.303	4.478	4.920	4.458	5.569
■ 2021	5.165	4.798	5.273	4.755	3.983	4.383	4.501	4.379	3.662	4.015	5.066	3.906
■ 2022	3.557	3.879	4.379	4.878	4.884	5.189	4.108	4.745	4.317	4.858	3.817	4.488

IMPORTS: METCOKE



IMPORTS: METCOKE

Metcoke imports of India upturned to twofold YoY and 5% MoM with 0.41 MMT of imports in December. Metcoke imports were 0.16 MMT in Dec 2021 and 0.39 MMT in Nov 2022. Metcoke imports in Dec totalled second-highest for the year.

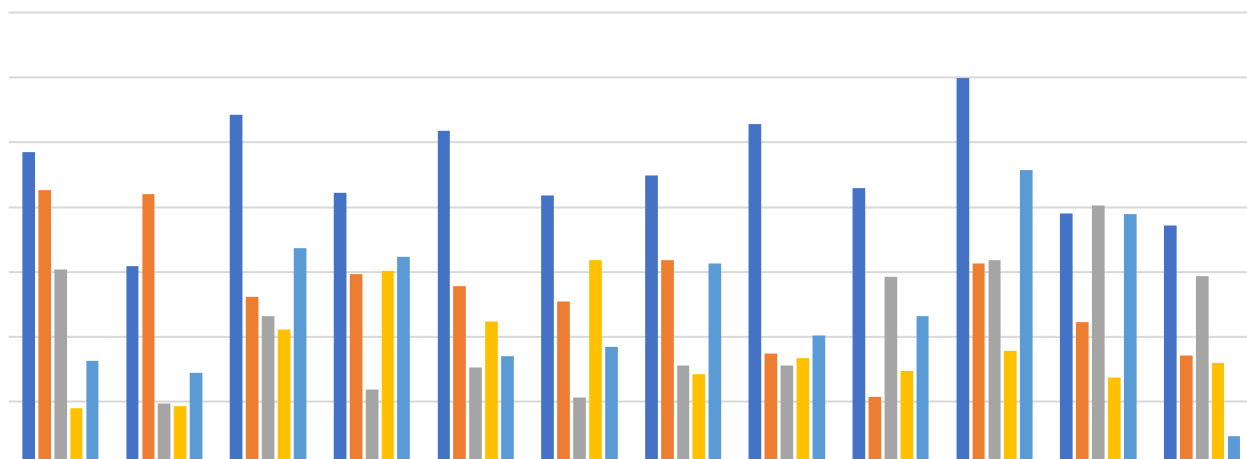
For the Dec month Colombian imports topped the metcoke imports chart with 0.099 MMT. China top the chart for the year 2022 at 0.92 MMT of imports. China has increased its metcoke exports to India in 2022 by fourteenfold compared to 2021. Imports from Poland have seen a decline of 10% at 0.88 MMT in 2022.

Imports of metcoke accumulated to 3.23 MMT for the entire year 2022 rising by 53% compared to the corresponding period of last year. Metcoke import was 2% higher in Dec-22 compared to the pre-covid period.

India's Met Coke Import (Metric Tons)										
	Dec-22	YoY		MoM		YTD (Full Calendar Year)				
		Dec-21	% Change	Nov-22	% Change	CY 2022	CY 2021	% Change	CY 2019 (Pre-Covid Level)	% Change
POLAND	67,738	65,361	3.64 %	160,053	(57.68)%	877,120	976,209	(10.15)%	808,627	8.47 %
CHINA	51,364			134,711	(61.87)%	921,182	61,106	1,407.52 %	569,618	61.72 %
COLOMBIA	99,357	47,883	107.50 %			595,722	516,811	15.27 %	451,747	31.87 %
JAPAN	47,500	33,000	43.94 %	22,000	115.91 %	349,524	299,090	16.86 %	429,628	(18.64)%
RUSSIA	67,616			17,807	279.72 %	160,150	70,016	128.73 %	441,467	(63.72)%
AUSTRALIA	51,974			51,174	1.56 %	231,530	79,408	191.57 %	211,781	9.33 %
INDONESIA	20,751			2,746	655.68 %	182,850	63,782	186.68 %	143,436	27.48 %
EGYPT							20,318		52,301	
MEXICO									52,710	
UKRAINE							43,000			
OTHER	451	14,309	(96.85)%	148	204.73 %	5,525	43,798	(87.39)%	83,343	(93.37)%
TOTAL	406,751	160,553	153.34 %	388,639	4.66 %	3,323,603	2,173,537	52.91 %	3,244,658	2.43 %



Metcoke (MMT)



	JAN	FEB	MAR	APR	MAY	JUN	JUL	AUG	SEP	OCT	NOV	DEC
■ 2018	0.485	0.309	0.543	0.422	0.518	0.418	0.448	0.528	0.429	0.599	0.391	0.372
■ 2019	0.426	0.420	0.261	0.297	0.278	0.255	0.318	0.175	0.108	0.314	0.222	0.172
■ 2020	0.304	0.098	0.232	0.119	0.153	0.107	0.156	0.156	0.293	0.318	0.403	0.293
■ 2021	0.091	0.093	0.212	0.302	0.224	0.318	0.143	0.167	0.148	0.179	0.137	0.161
■ 2022	0.164	0.145	0.337	0.324	0.170	0.185	0.313	0.202	0.232	0.457	0.389	0.047

IMPORTS: ANTHRACITE

IMPORTS: ANTHRACITE

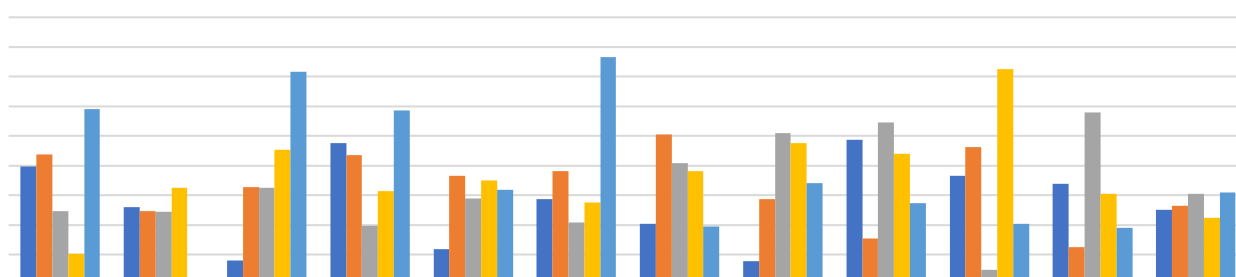
Anthracite imports into India touching a four-month high accumulated to 0.16 MMT in Dec-22 with 39% YoY and 64% MoM rise. Metcoke import in Nov-22 was 0.095 MMT and in Dec-21 was 0.11 MMT.

Russian imports with the highest shipments of Anthracite into India totalled 0.15 MMT(97% share in total imports) with 81% MoM and to twofold YoY increase in Dec month. For the CY 2022 Russian imports stays stable with 1.83 MMT of total imports.

Total anthracite imports stand at 2.26 MMT in the year 2022. The imports are up by 3% from last year's level of 2.19 MMT and 13% from the pre-covid level of 1.99 MMT.

India's Anthracite Import (Metric Tons)										
	Dec-22	YoY		MoM		YTD (Full Calendar Year)				
		Dec-21	% Change	Nov-22	% Change	CY 2022	CY 2021	% Change	CY 2019 (Pre-Covid Level)	% Change
RUSSIA	150,550	72,762	106.91 %	83,077	81.22 %	1,834,866	1,831,281	0.20 %	1,737,686	5.59 %
SOUTH AFRICA		22,886				283,532	265,650	6.73 %	44,753	533.55 %
VIETNAM		10,000				19,550	63,709	(69.31)%	84,150	(76.77)%
CHINA	3,077	5,566	(44.72)%	6,874	(55.23)%	41,661	22,462	85.48 %	37,021	12.53 %
PERU						65,870				
OTHER	1,419	489	190.42 %	4,592	(69.10)%	9,752	2,017	383.49 %	84,620	(88.48)%
TOTAL	155,046	111,703	38.80 %	94,543	64.00 %	2,255,232	2,185,118	3.21 %	1,988,231	13.43 %

Anthracite (MT)



	JAN	FEB	MAR	APR	MAY	JUN	JUL	AUG	SEP	OCT	NOV	DEC
■ 2018	0.198	0.130	0.040	0.238	0.059	0.144	0.102	0.039	0.244	0.183	0.170	0.126
■ 2019	0.218	0.123	0.164	0.218	0.183	0.190	0.253	0.144	0.077	0.231	0.063	0.132
■ 2020	0.123	0.122	0.163	0.099	0.145	0.104	0.204	0.255	0.273	0.024	0.289	0.153
■ 2021	0.052	0.162	0.227	0.157	0.175	0.137	0.191	0.238	0.220	0.363	0.152	0.112
■ 2022	0.296	0.011	0.358	0.293	0.159	0.383	0.097	0.171	0.137	0.102	0.095	0.155

IMPORTS: PCI

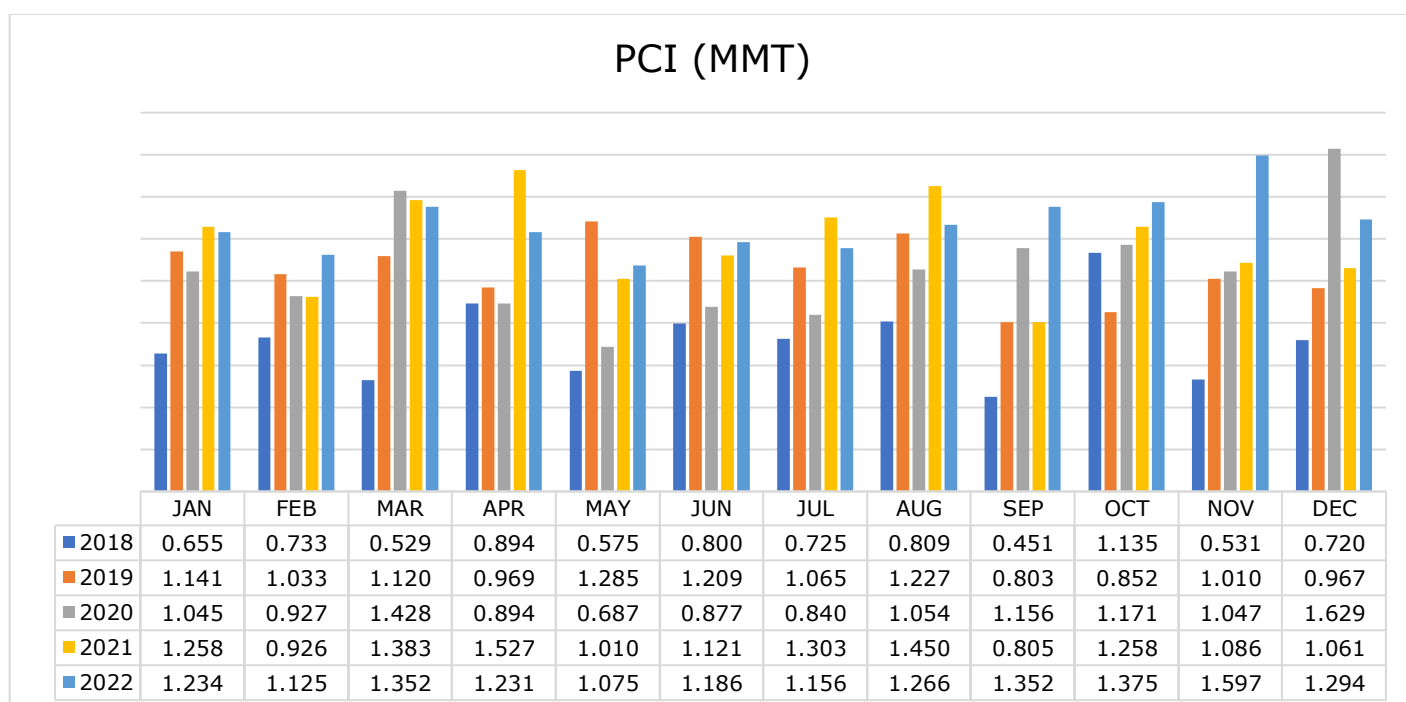
IMPORTS: PCI

Indian PCI imports for the Dec month of the year 2022 summed up 1.29 MMT, a 22% YoY hike, however 19% down MoM. PCI imports after touching a two-year high last month are now low to four months. Total imports for the last year and last month were 1.06 MMT and 1.56 MMT respectively.

Russia imports yet again come up as the top supplier of PCI to India with 0.90 MMT in December month at a fourfold YoY rise and 8% MoM decline. Russia increased its exports to India in 2022 to twofold compared to last year as well as the pre-covid level. Australian import share reduced drastically by 31% in 2022 with a comparable period of 2021.

PCI imports accumulated to 15.25 MMT for the year 2022 from 14.19 MMT, a 7% rise. The imports were 20% higher than the pre-covid level of 12.68 MMT in CY 2019.

India's PCI Import (Metric Tons)										
	Dec-22	YoY		MoM		YTD (Full Calendar Year)				
		Dec-21	% Change	Nov-22	% Change	CY 2022	CY 2021	% Change	CY 2019 (Pre-Covid Level)	% Change
AUSTRALIA	397,994	865,657	(54.02)%	618,159	(35.62)%	7,285,429	10,623,812	(31.42)%	8,923,566	(18.36)%
CANADA						32,010			263,096	(87.83)%
RUSSIA	895,953	194,927	359.64 %	978,407	(8.43)%	7,928,303	3,562,954	122.52 %	3,493,931	126.92 %
TOTAL	1,293,947	1,060,584	22.00 %	1,596,566	(18.95)%	15,245,742	14,186,766	7.46 %	12,680,593	20.23 %



IMPORTS: RUSSIA



IMPORTS: RUSSIA

Russian imports in December month declined to 24% at 1.88 MMT with some supply issues and overall low demand from the Indian market. Howbeit the imports expanded by twofold compared to Dec-21.

The year 2022 changed the coal seaborne trade pattern drastically with Russia's invasion of Ukraine. The west's sanctions on Russia diverted Russian coal to the countries with no sanctions. India gets the benefit from competitive coal by not limiting Russian imports. Russian imports for the year 2022 touched 20.46 MMT from just 7.56 MMT in 2021, a twofold YoY rise.

Russia has improved its imports specially in non-coking coal, coking coal and PCI categories. The imports of non-coking coal from Russia which was around 1.87 MMT in 2021 increased by 8.79 MMT in 2022 with a fourfold YoY rise. Coking coal and PCI also expanded by eightfold and onefold YoY respectively.

India's Import from Russia - Coal and Coke (Metric Tons)										
	Dec-22	YoY		MoM		YTD (Full Calendar Year)				
		Dec-21	% Change	Nov-22	% Change	CY 2022	CY 2021	% Change	CY 2019 (Pre-Covid Level)	% Change
ANTHRACITE	150,550	72,762	106.91 %	83,077	81.22 %	1,834,866	1,831,281	0.20 %	1,737,686	5.59 %
COKING COAL	328,860	74,058	344.06 %	183,800	78.92 %	1,745,230	198,058	781.17 %	300,820	480.16 %
MET COKE	67,616			17,807	279.72 %	160,150	70,016	128.73 %	441,467	(63.72)%
NON COKING COAL	437,149	347,639	25.75 %	1,196,125	(63.45)%	8,792,821	1,872,502	369.58 %	2,815,945	212.25 %
PCI	895,953	194,927	359.64 %	978,407	(8.43)%	7,928,303	3,562,954	122.52 %	3,493,931	126.92 %
PET COKE		150				188	25,655	(99.27)%		
TOTAL	1,880,128	689,535	172.67 %	2,459,216	(23.55)%	20,461,558	7,560,465	170.64 %	8,789,849	132.79 %

EXPORTS: TOTAL COAL & COKE



EXPORTS: TOTAL COAL & COKE

India's total coal and coke exports has been drop by 52% YoY to 0.19 MMT in December 2022 from 0.39 MMT in December 2021. The MoM exports surged by twofold from 0.057 MMT in Nov 2022. Cumulative exports for the year 2022 stood at 1.75 MMT, 28% down from the previous year.

During the month of Dec, India's Metcoke exports reduced to 81% YoY and up by twofold MoM. Export of Metcoke in CY 2022 with total exports of 0.61 MMT contracted by 56% compared to CY 2021.

Petcoke exports from India increased by 13% YoY and 70% MoM. Export of Petcoke by India with total exports of 0.20 MMT is down by 38% in CY22, compared to CY 2021.

Total exports of coal are down to 28% YoY and increased by a threefold MoM basis. Export of coal in CY 2022 with a total of 0.94 MMT surged by 26% compared to CY 2021.

Total Export of Coal & Coke (Metric Tons)			
	Met Coke	Pet Coke	Coal
2018	18,060	862,875	122,167
2019	48,707	465,872	662,575
2020	88,715	668,913	577,966
2021	1,384,019	318,930	746,476
Jan-22	93,266	19,922	82,377
Feb-22	39,562	25,098	57,081
Mar-22	138,177	6,900	102,818
Apr-22	99,160	31,311	86,253
May-22	33,084	15,168	80,681
Jun-22	57,548	1,924	67,186
Jul-22	8,607	8,772	74,288
Aug-22	12,964	9,561	60,623
Sep-22	63,269	44,268	74,624
Oct-22	18,857	18,543	77,013
Nov-22	13,353	6,264	37,615
Dec-22	34,136	10,662	141,323
2022	611,983	198,384	941,882



iEnergy Natural Resources Limited and their employees, contractors, and partners have taken due care and caution in the compilation of content for this Reports. Information is just for private Circulation and reference only not intended for trading purpose or to address your particular requirement. The content includes facts, views, and opinions are of individuals.

We are not giving investment advice, tax advice, legal advice, or other professional advice. We do not guarantee or warrant the accuracy, completeness or timeliness of, or otherwise endorse these views, and opinions. Users/Viewers have to make their own decisions based on their own independent enquiries, appraisals, judgement, wisdom and risks. iEnergy Natural Resources limited and their employees, contractors and partners shall not be liable or responsible for any loss or costs or any action whatsoever arising out of use or relying on the data presented here

*Data shown and used in this reports are **either** freely available on public domain **or** our in-house primary data. You can write us on care@inr.in in case you are owner of data and you want credit or removal.*



US Coal | Indonesian Coal | South African Coal | Anthracite | Coking Coal | Screened Coal | Met Coke

CIN - U51909GJ2018PLC103166

IENERGY NATURAL RESOURCES LIMITED

📍 210 Royal Square, Near Shilp Tower
Tagore Road, Rajkot, Gujarat - 360002, India

📞 +91 281 2465640

📞 +91 90999 33816

✉ care@inrl.in

🌐 www.inrl.in